



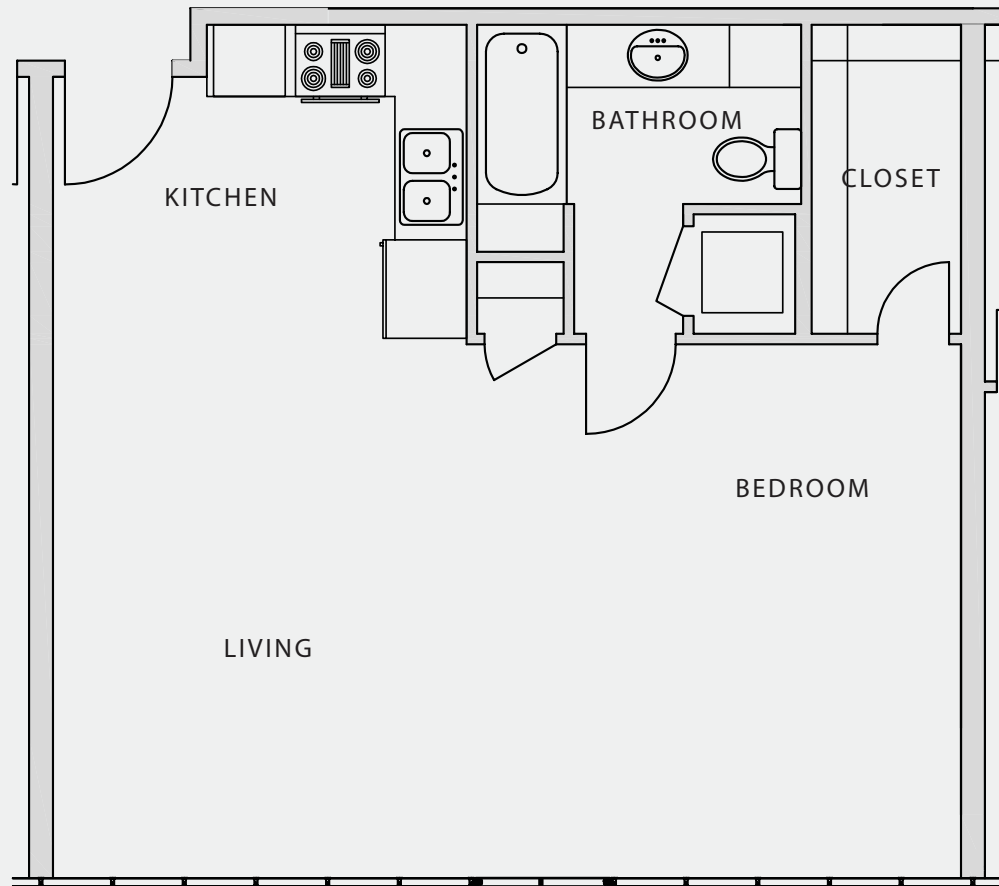
on congress

## UNIT H2 - Flat

1 BEDROOM | 1 BATH

TOTAL | 673 SF

VILLAGEONCONGRESS.COM



[KALWALL]

SALES + MARKETING BY



A  
**RICHARD COONS**  
Project



The unit or units shown herein are merely approximations and do not reflect the as-built dimensions of the same. The as-built dimension and size of the unit or units may vary from dimension and size reflected hereon.